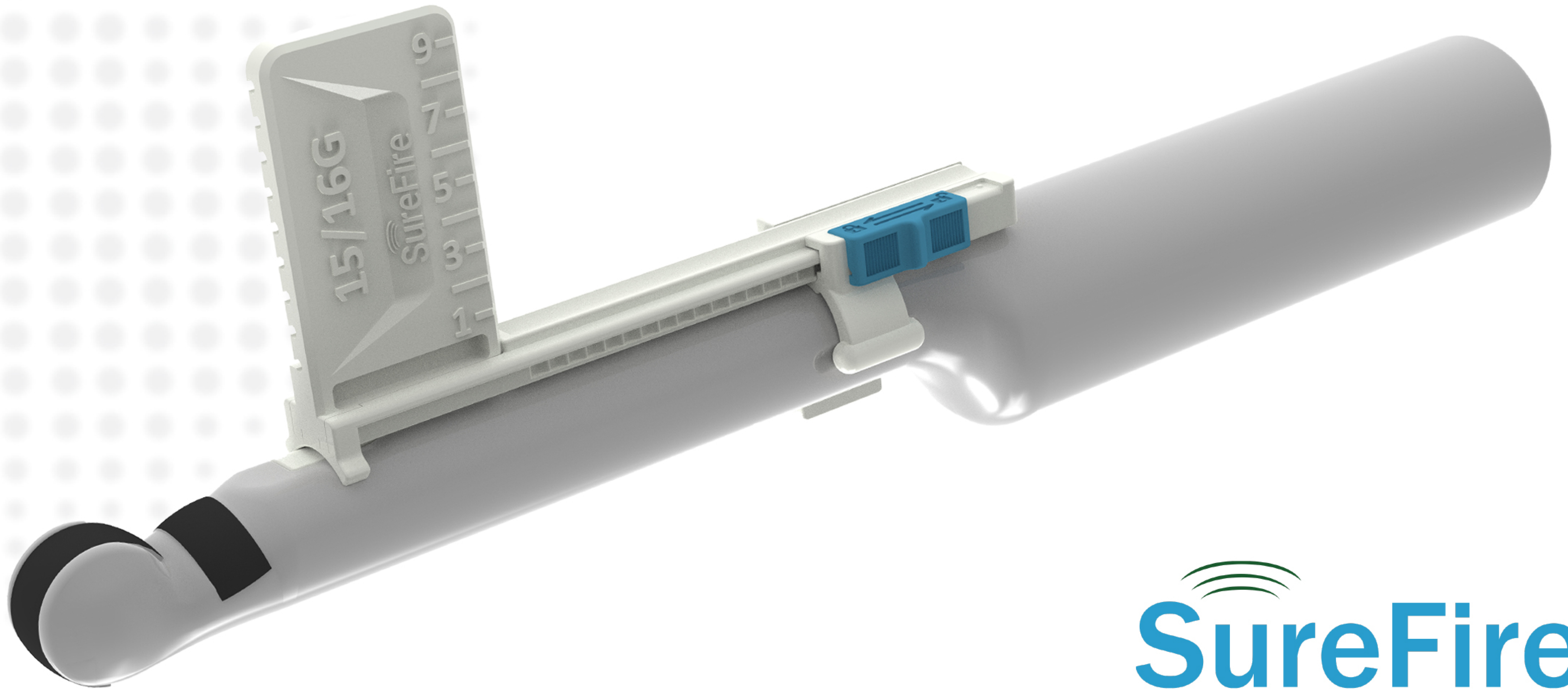


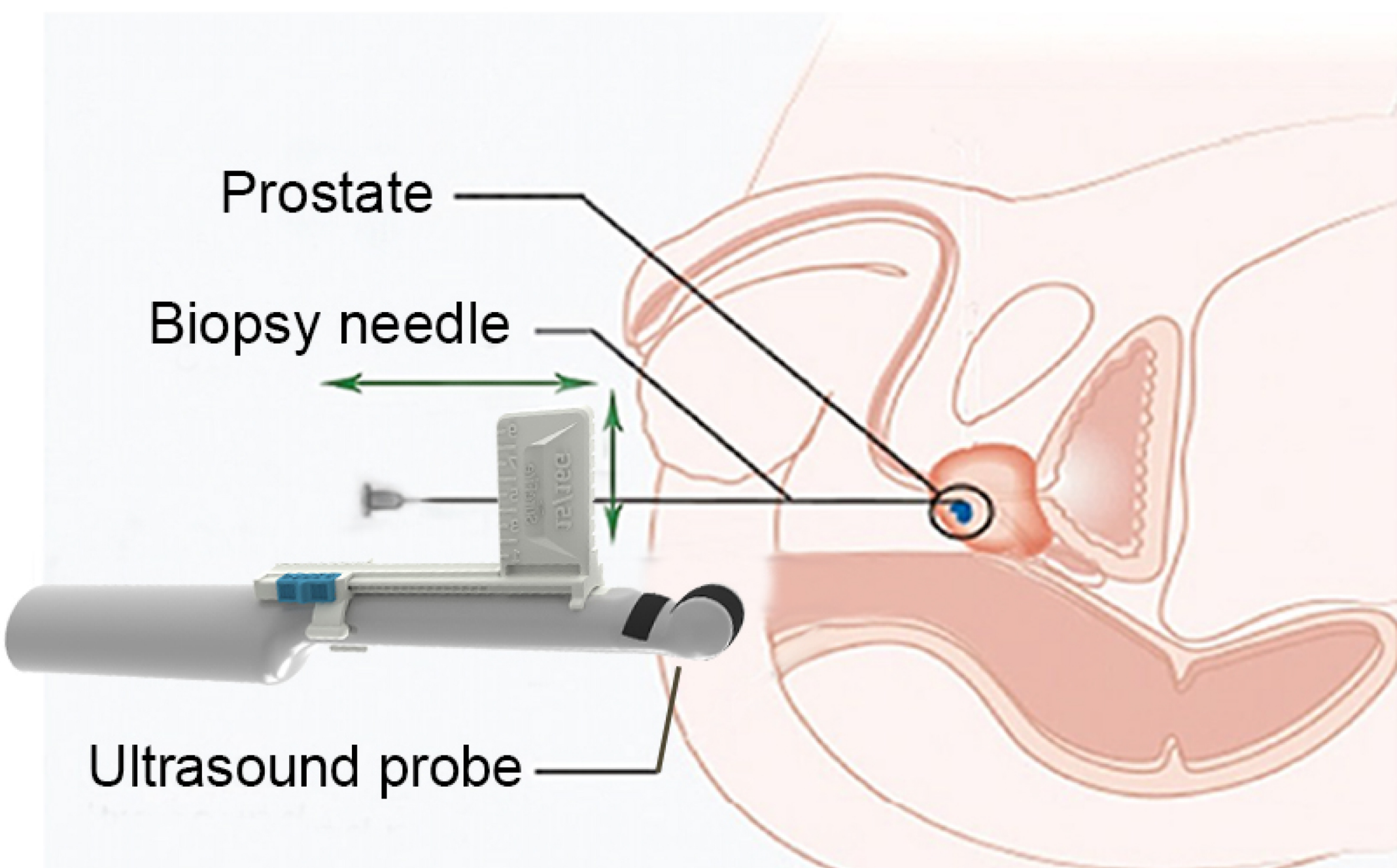


# Transperineal Biopsy Guide AMD SureFire for BK 8818 and E14C4t Triplane Probes

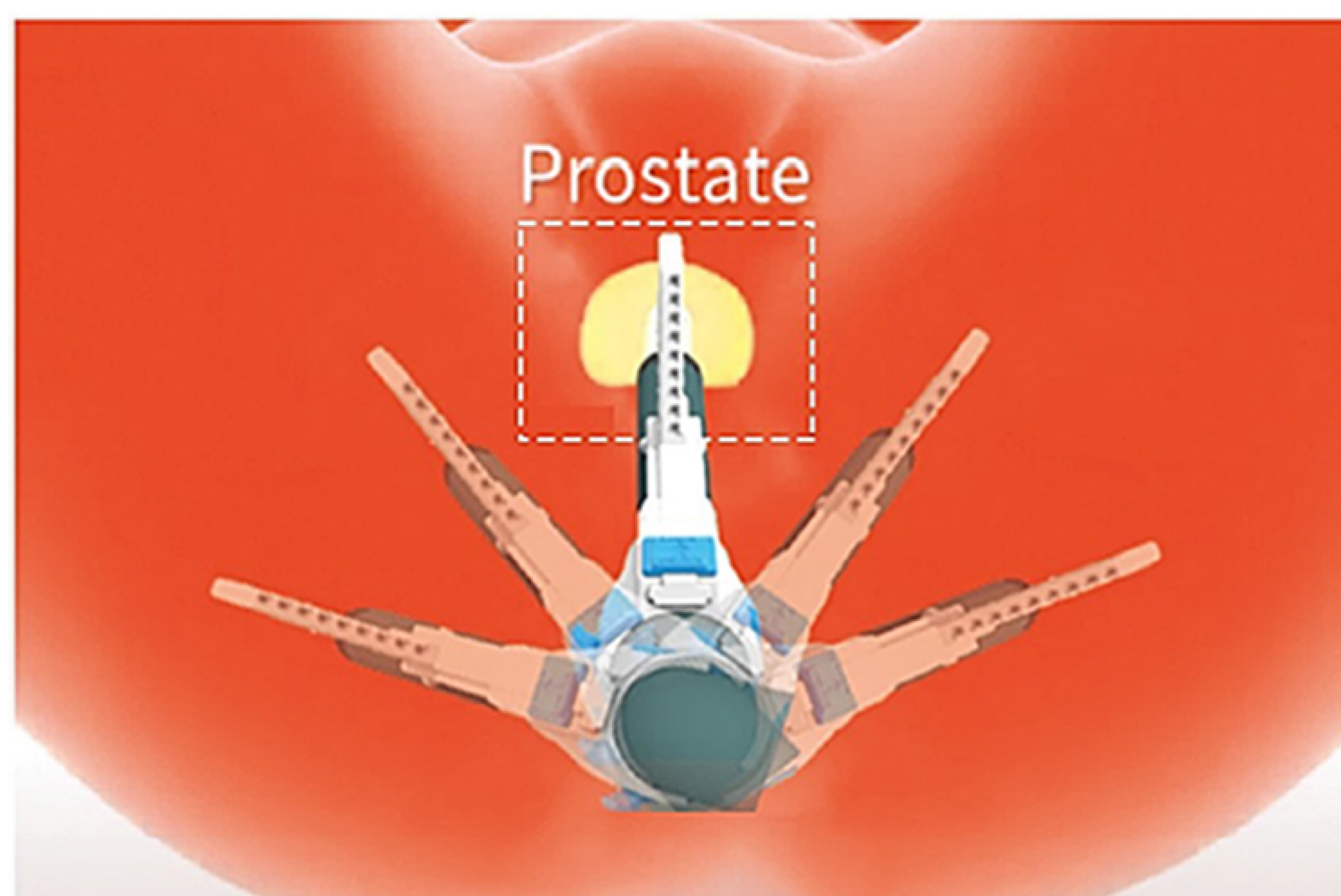


## Why SureFire for your Triplane Probe?

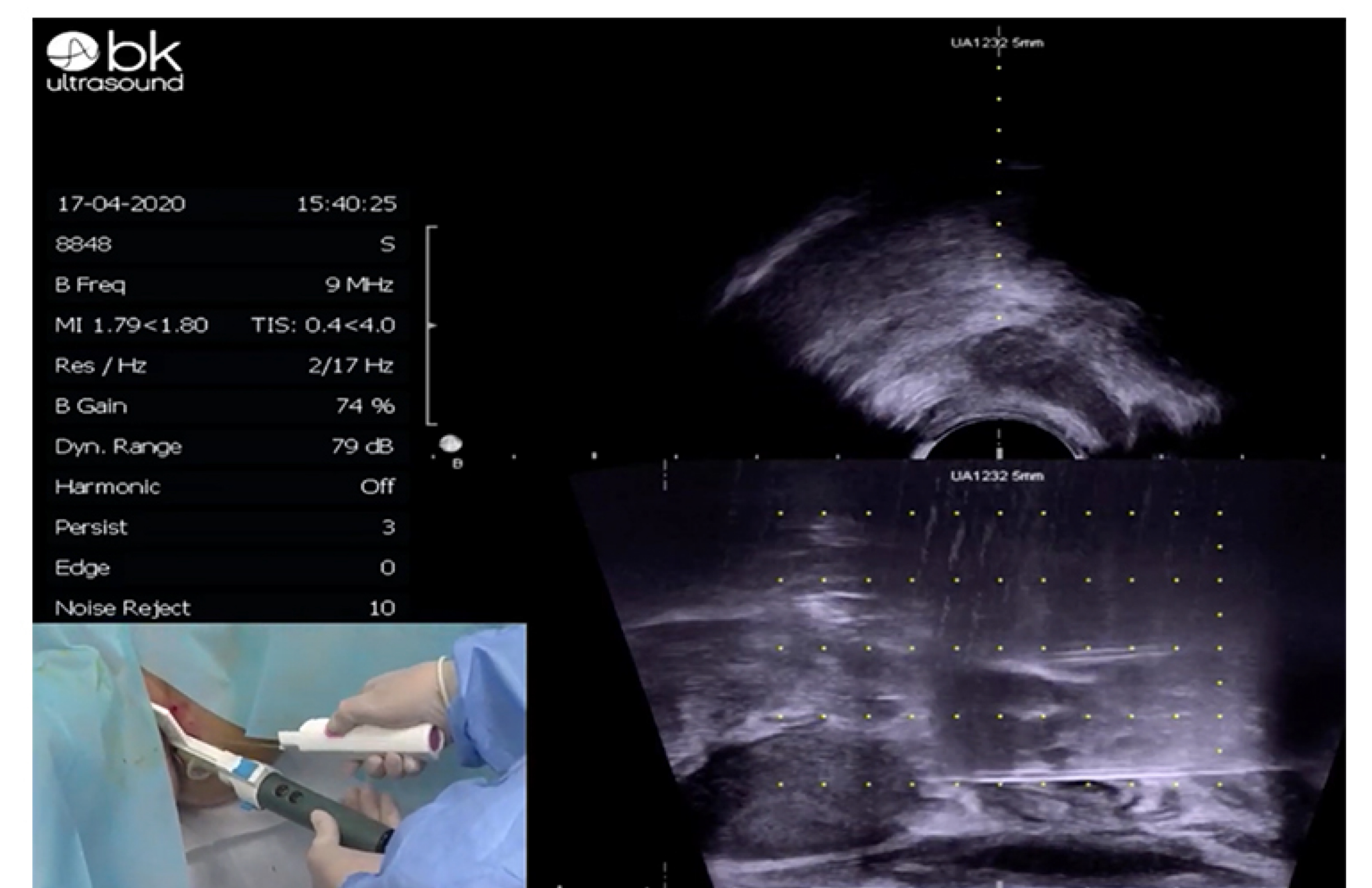
- Broaden procedures provided on your Triplane biopsy probe
- Less Infection
- Eliminate time consuming steppers



• Vertical access to 8cm. with 9 puncture channels



• Free Sectorial plane adjustment



• Calibrated to all the guidelines

## Order information

Order No.	Description	Needle Size	Hole	Height	Packaging
28-TPUA170	BK 8818   BK E14C4t	15G-16G	9 Closed Channel	8cm	10ea/Case
28-TPUA172	BK 8818   BK E14C4t	17G-18G	9 Closed Channel	8cm	10ea/Case



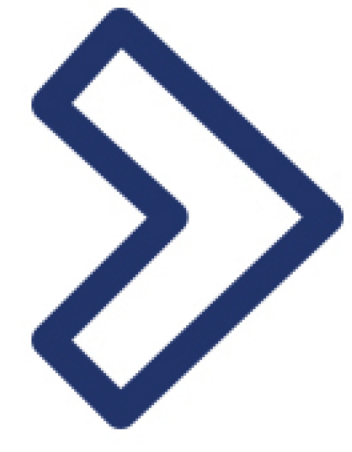
01782 637009

www.deltasurgical.co.uk





1. Apply gel on probe tip and place cover.



2. Install the guide by placing the bracket into the open channel on the probe.



3. Blue unlock/lock button adjusts needle plate horizontally.



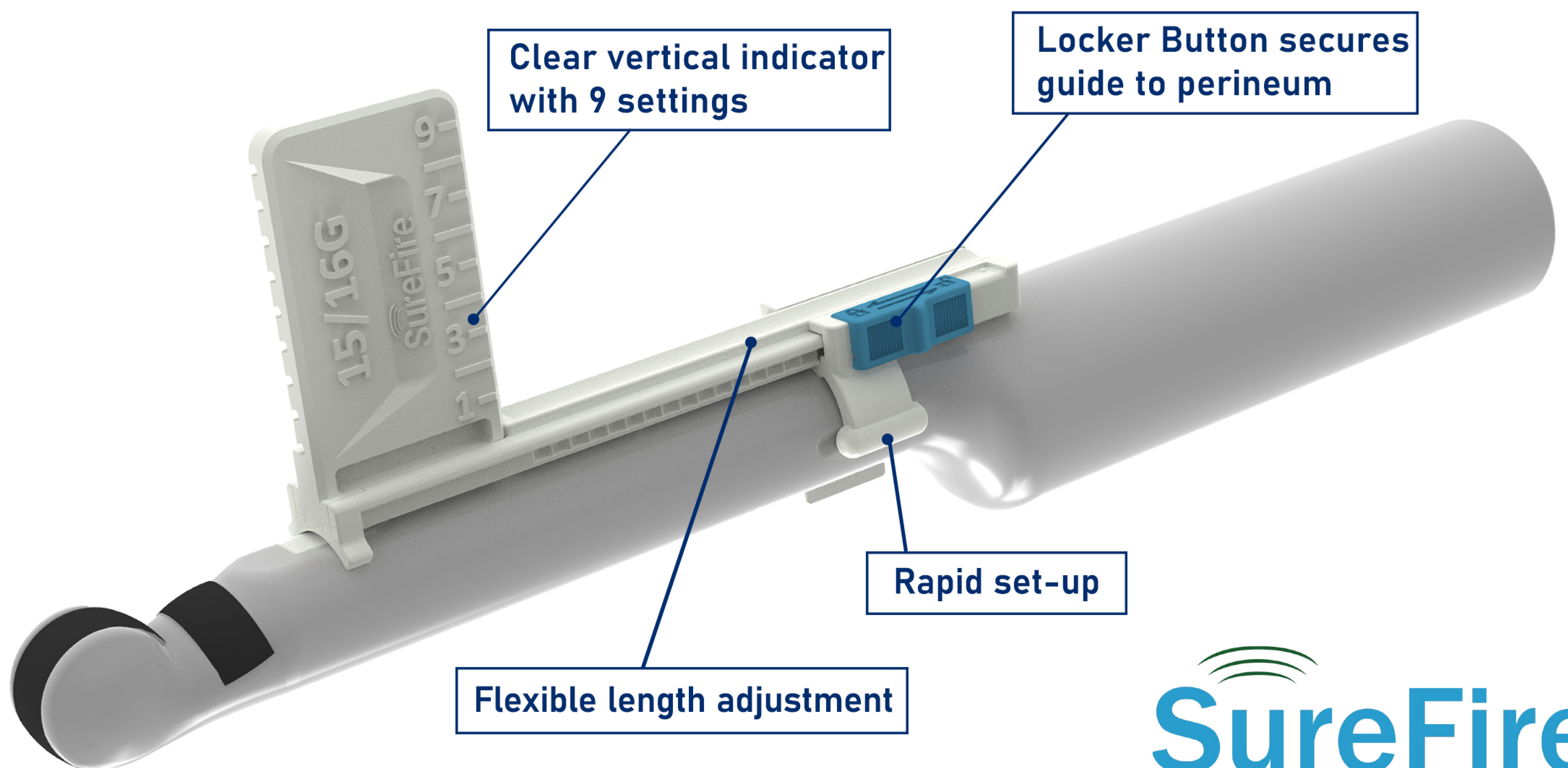
4. Apply gel to the cover tip and insert the probe.



5. Insert the introducer needle and biopsy needle through the channel guide to biopsy targets.



6. When procedure has ended, open the fixation latch and dispose of the guide.



# SureFire