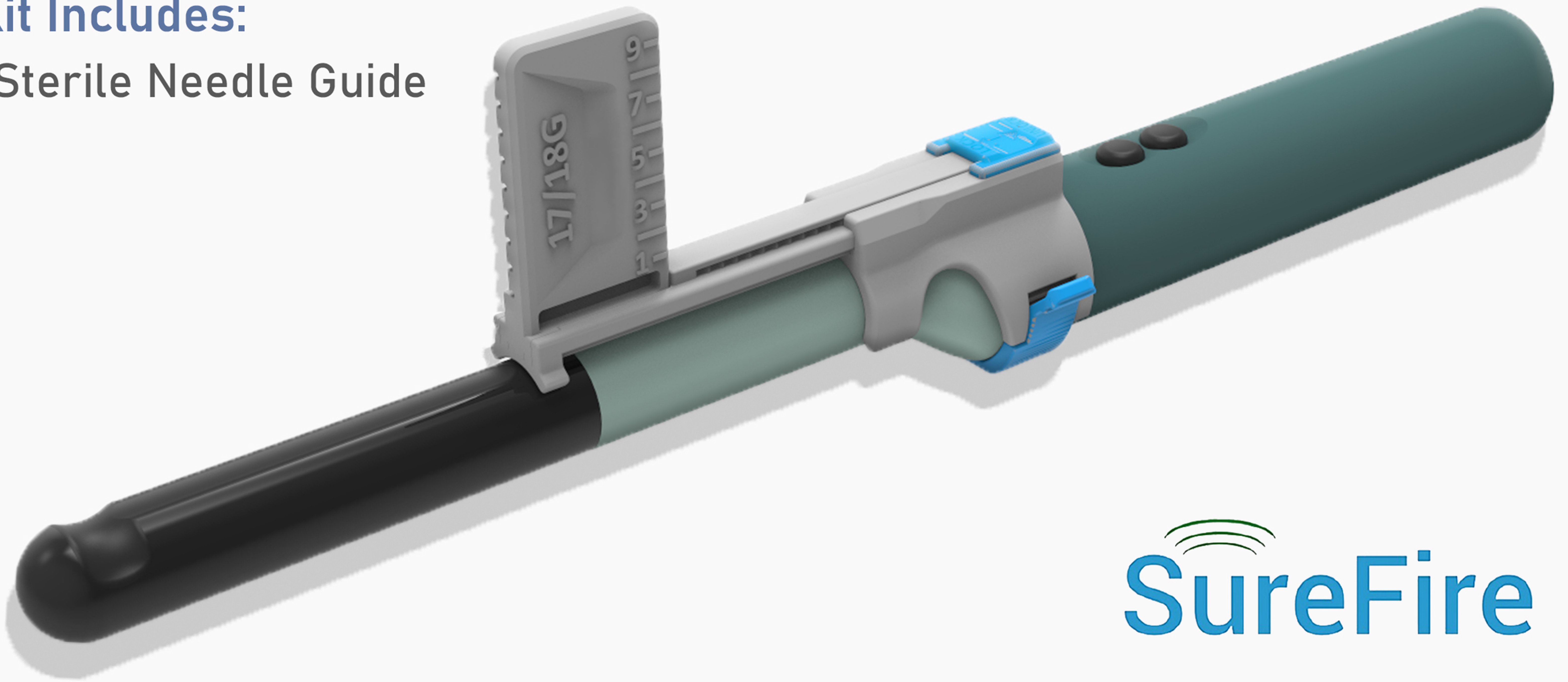




# Transperineal Biopsy Guide AMD SureFire for the BK 48 and E14CL4b Biplane Probes

## Kit Includes:

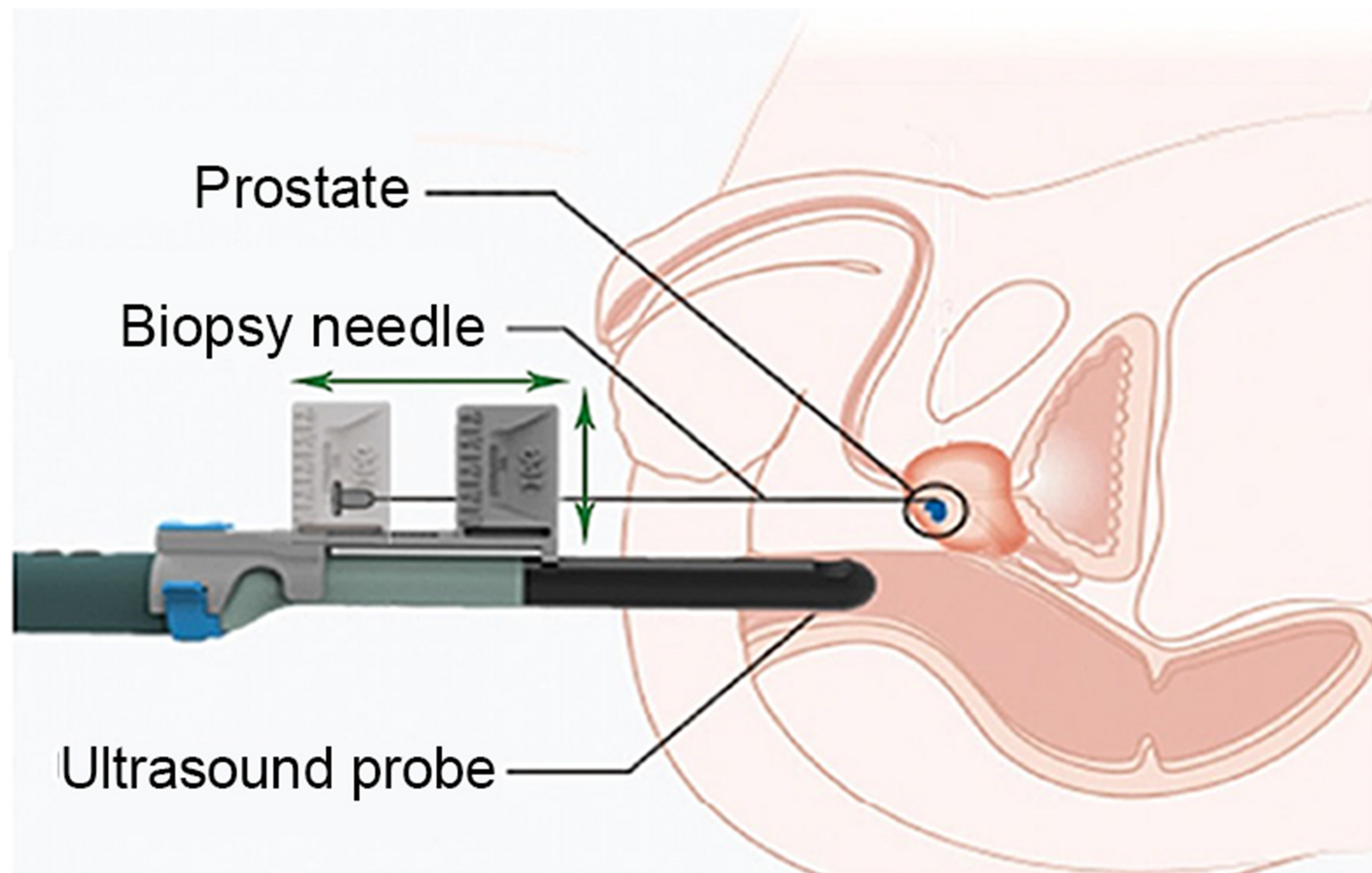
- Sterile Needle Guide



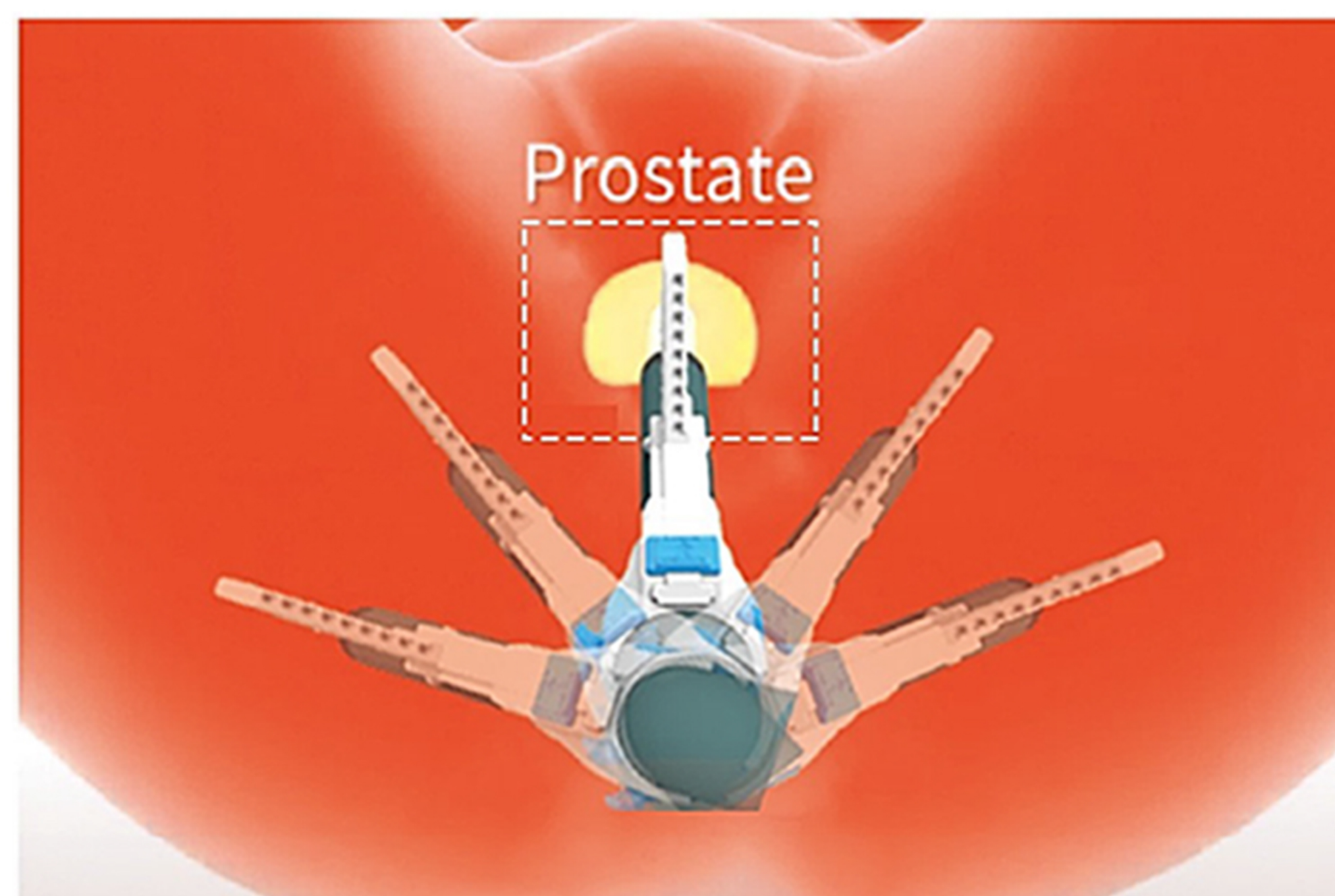
# SureFire

## Why Transperineal? Why SureFire?

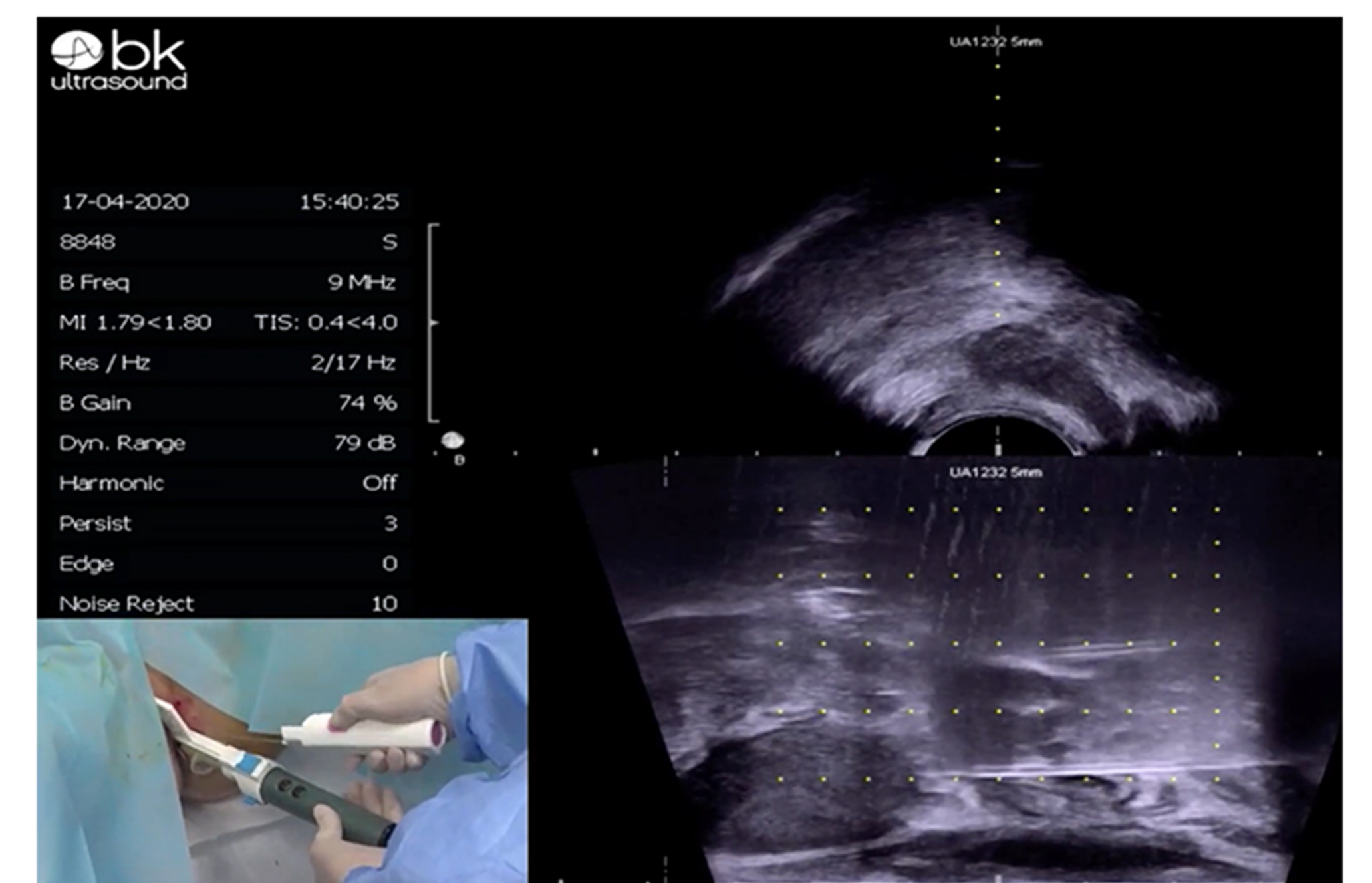
- Oriented to Patient's MRI
- Less Infection<sup>1</sup>
- Eliminates ££ Steppers



• Vertical access to 8cm. with 9 puncture channels



• Free Sectorial plane adjustment



• Calibrated to all the guidelines

## Order information

Order No.	Description	Needle Size	Hole	Height	Packaging
28-TPG114	BK 8848   BK E14CL4b	15G-16G	9 Closed Channel	8cm	10ea./Box
28-TPG116	BK 8848   BK E14CL4b	17G-18G	9 Closed Channel	8cm	10ea./Box



01782 637009

www.deltasurgical.co.uk



Medical Designs, Inc.



1. Apply gel on probe tip and place cover.



2. Install guide by aligning the fixation point to the guide.



3. Secure the guide by placing the locking arm into the locker slot.



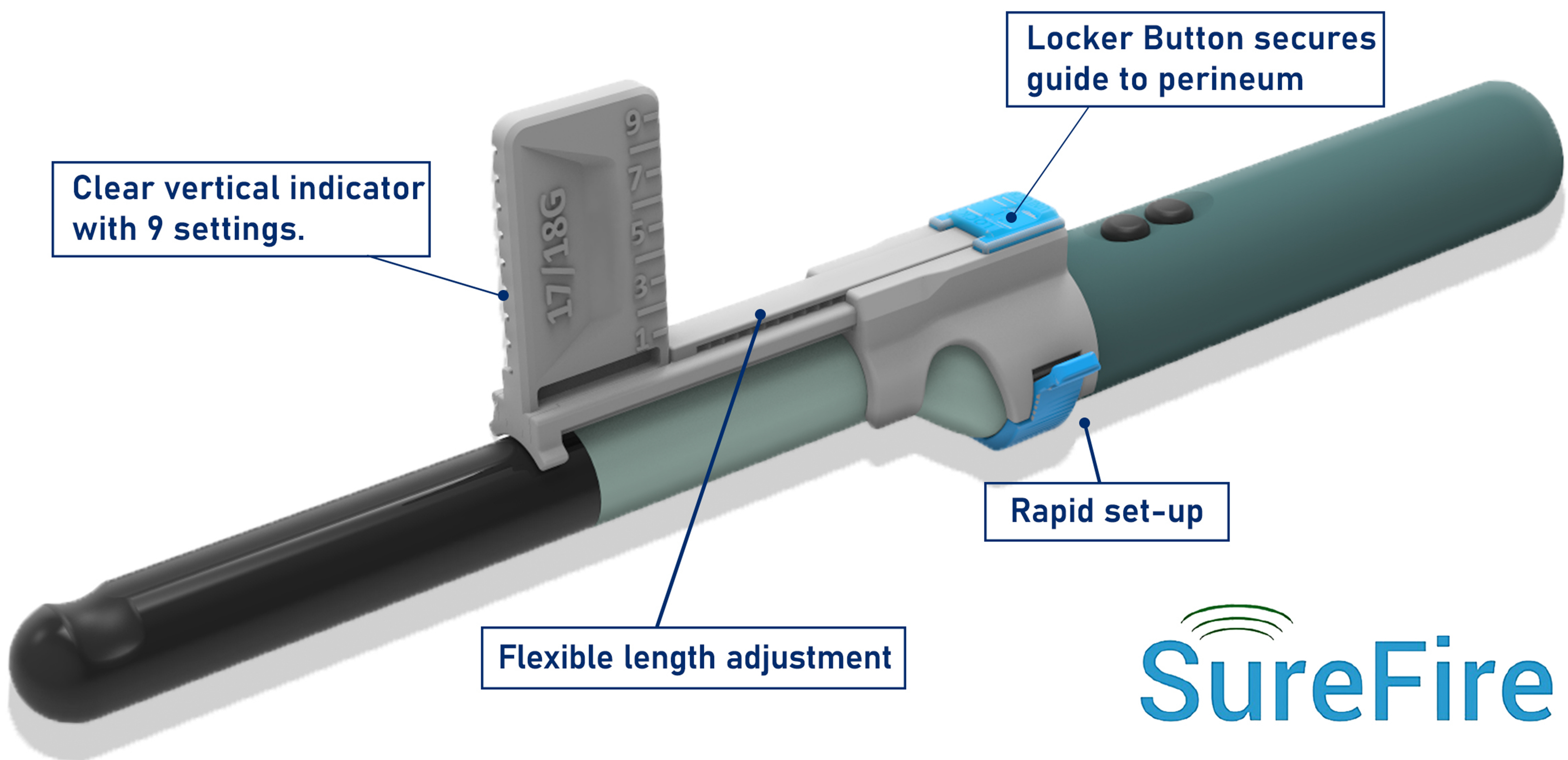
6. Rotate the probe to desired region. Insert instrument through a channel which corresponds to the target.



5. Blue unlock/lock button adjusts needle plate horizontally.



4. Apply gel to the cover tip and insert the probe.



# SureFire