

### 1. Open and Dispense

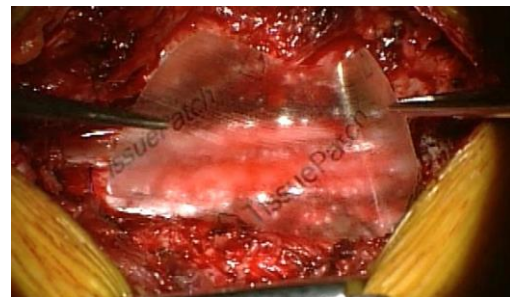
**Zero preparation – 60 seconds application - Secure result.**



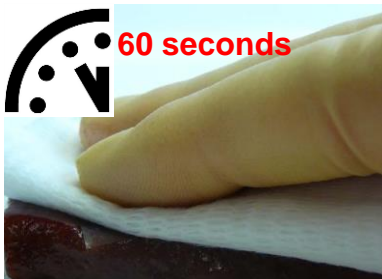
Carefully peel apart inner pouch in sterile field. Now gently remove patch with forceps. No preparation is necessary and the patch is now ready to use. **Ensure the logo is facing upwards and is readable** throughout placement.

### 2. Apply to Target Tissue

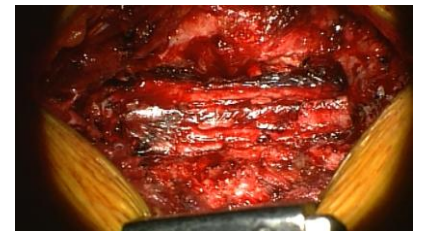
Target tissue should be gently swabbed, but does not need to be absolutely dry. Place the patch gently on the tissue. Aim for a **1cm margin from suture line to the edge of the Patch**. If necessary the patch can be repositioned if this is performed immediately.



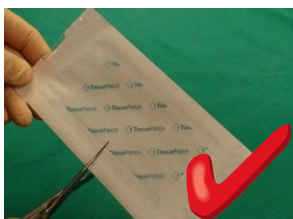
### 3. Adhere to Target Tissue



Hold a **damp swab** over the patch, “encouraging contact” for **60 seconds**. If reassurance is needed repeat the exercise but do not reposition or move the patch once in position. Overlapping patch edges to achieve coverage is possible although adhesion to underlying patch will be reduced.



### Suggestions:



**Can TD be cut to shape or size?**

**Yes.** To restrict handling to a minimum, it is suggested that patch be cut in the sleeve first before removing.



**Does TD need to be wet before application?**

**No.** However, hydration does enhance handling characteristics. See over leaf for further details.



**Should adherence be tested before closure?**

**If desired**, but avoid using sharp instruments to prevent “puncturing” the patch.